

# iWedgeIt™

## User Guide



**110 Lake Avenue South, Suite 35**

**Nesconset, NY 11767**

**(631) 360-3400 FAX (631) 360-3268**

Website: <http://www.invisionsoft.com>

## Document Information

**Document Version:** 1.02

**Classification:** Proprietary

**Release Date:** 10/26/05

**Document ID:** iWedgeItUserGuide.doc

### ABOUT THIS USER GUIDE

This user guide describes how to set up and use iWedgeIt™. The instructions are intended as general guidance only and may not match requirements for your terminal. For specific information, refer to the documentation for your terminal.

### REVISION HISTORY

Document Identifier	Date	Description
iWedgeItUserGuide.doc	January 2004	v1.0, First Release
iWedgeItUserGuide.doc	August 2004	V1.01 Revised document
iWedgeItUserGuide.doc	October 2005	V1.02 Revised document

### NEW IN THIS VERSION

- Version 1.02 – Improved explanation of demo mode. In Configuration, added suggested test using Memo Pad.
- Version 1.01 – Expanded installation step 7 on page 1. Load SWedgePanel.prc first and then ScanWedge.prc, since a soft reset may occur automatically after you load the wedge.

## Notice

**Copyright ©2004, InVision Software, Inc. All rights reserved.**

All rights reserved. This document in full or in part may not be copied, photocopied, reproduced, translated, or reduced to any electronic medium or machine readable form without the prior written consent of InVision Software, Inc. The information contained in this document constitutes proprietary information which is the property of InVision Software, Inc. and is protected by copyright. It may only be used for the purposes intended. Distribution of this information is made to customers and prospective customers of InVision Software, Inc. for the sole purpose of assisting in the use and understanding of an InVision Software, Inc. product.

InVision Software, Inc. makes no warranty of any kind with regard to this material, including, but not limited to, the documentation, function, and performance of these systems, and their suitability for any particular purpose. Further, InVision Software, Inc. reserves the right to revise this publication and to make changes to it from time to time without obligation to notify any person or organization of such revision or changes. InVision Software, Inc. shall not be liable for any errors contained herein or for incidental or consequential damages in connection with the furnishing, performance, or use of this manual, the software, or the hardware of this system.

## Trademarks

iWedgeIt™ is a trademark of InVision Software, Inc.

Other product names mentioned in this manual may be trademarks or registered trademarks of their respective companies and are hereby acknowledged.

## Contacts

For system, product or services availability and specific information, please contact us at: [info@invisionsoft.com](mailto:info@invisionsoft.com)

## Contents

---

<b>INTRODUCTION.....</b>	<b>1</b>
<b>MINIMUM REQUIREMENTS .....</b>	<b>1</b>
<b>INSTALLATION.....</b>	<b>1</b>
<b>Demo Mode.....</b>	<b>1</b>
<b>REGISTRATION .....</b>	<b>2</b>
<b>UNLOCKING IWEDGEIT .....</b>	<b>3</b>
<b>CONFIGURATION.....</b>	<b>4</b>
<b>OPTIONAL CODE TO ENABLE/DISABLE SCAN WEDGE.....</b>	<b>5</b>
<b>SAMPLE CODE .....</b>	<b>5</b>

## Figures

---

Figure 1 Terminal Preferences.....	2
Figure 2 iWedgeIt Preferences .....	2
Figure 3 iWedgeIt Registration - Initial.....	2
Figure 4 Unlock Key Entered.....	3
Figure 5 iWedgeIt Preferences .....	3
Figure 6 Scan Wedge Preferences.....	4
Figure 7 Setup Menu .....	4
Figure 8 Hardware Setup.....	4
Figure 9 Code Format Setup .....	4
Figure 10 iWedgeIt Application Setup .....	4

## Introduction

---

**iWedgeIt™** is a keyboard wedge application designed for use with Symbol Technologies Palm Powered™ terminals. iWedgeIt lets the user scan data into any field that expects keyboard input, allowing any application to enjoy the benefits of bar code data entry.

iWedgeIt comes in two parts:

- Keyboard Wedge Program
- Configurator Program

## Minimum Requirements

---

iWedgeIt can be installed on any Symbol Technologies terminal with Palm OS® 3.5 and up.

## Installation

---

1. Connect your terminal to the desktop PC using your local HotSync cradle.
2. Open your web browser, type the URL provided by InVision Software (<http://www.invisionsoft.com/>....) and press **Enter**. The File Download dialog is displayed.
3. Click **Save**.
4. When download is complete, click **Open Folder** and double-click the downloaded .zip file.
5. Display and review any ReadMe.txt file.
6. Display and read **License Agreement iWedgeIt.doc**.
7. Double-click each **.prc** file (ScanWedge.prc and SWedgePanel.prc) to add it to the Palm Quick Install window. Load SWedgePanel.prc first and then ScanWedge.prc, since a soft reset may occur automatically after you load the wedge.
8. Synchronize the terminal with the PC.
9. Soft-reset your terminal.

You can now register and configure the application as described in the next few pages.

## Demo Mode

Until you purchase and register the application, iWedgeIt will run only in demo mode. Set up the application as described in [Configuration](#). The demo will be disabled after 20 scans.

## Registration

When you register iWedgeIt as described below, you will receive by return email the unlock key required to use the application beyond demo mode. Unless you register and unlock the application, it will be disabled after 20 scans.

1. On the Applications Launcher, tap **Preferences** and then select **ScanWedge** from the menu.

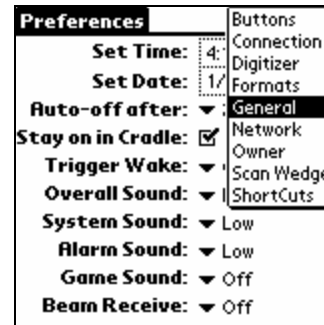


Figure 1 Terminal Preferences

2. In the iWedgeIt Preferences screen, tap the **Register** button.

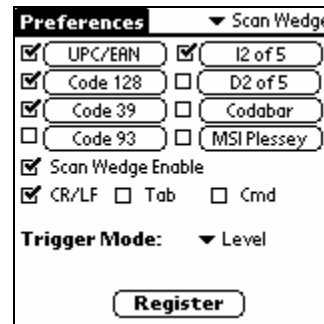


Figure 2 iWedgeIt Preferences

3. The Scan Wedge User Registration screen shows that the program is currently unregistered and shows a Palm User Name and RegCode. Email both of these items to [info@invisionsoft.com](mailto:info@invisionsoft.com). In return you will receive the unlock key for your terminal.



Figure 3 iWedgeIt Registration - Initial

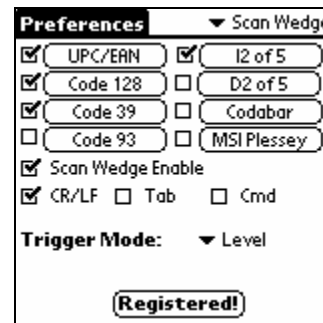
## Unlocking iWedgeIt

1. Display the iWedgeIt screen as described above. Tap the **unlock key** entry line and enter the key you received by email. Tap **Enter** and then tap **Done**.



**Figure 4 Unlock Key Entered**

2. The Preferences screen now indicates that the product is registered.



**Figure 5 iWedgeIt Preferences**

## Configuration

1. In the Scan Wedge Preferences screen:
  - a) select and configure barcode symbologies; and select a trigger mode setting, as described in Symbol Technologies documentation;
  - b) enable and disable the scan wedge;
  - c) add carriage returns or tabs to the scanned data;
  - d) implement a Palm OS Command shortcut
2. Three additional setup screens are available:
  - Hardware Setup
  - Code Format Setup
  - Application Setup.

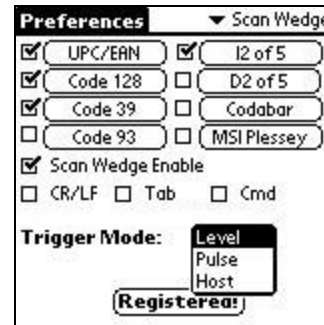


Figure 6 Scan Wedge Preferences

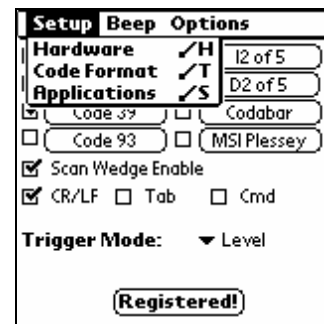


Figure 7 Setup Menu

3. Symbol Technologies documentation describes Hardware Setup and Code Format Setup.



Figure 8 Hardware Setup

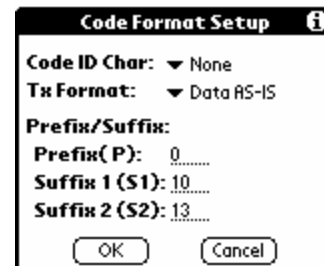


Figure 9 Code Format Setup

4. In the Application Setup screen, indicate the applications with which you intend to use iWedgeIt. You cannot use the scan wedge with an application unless you select it in this list. Any application that already uses the scanner internally will not show up in the list. iWedgeIt can not be used with an application that opens the scanner port itself. These applications do not need iWedgeIt to use the scanner.

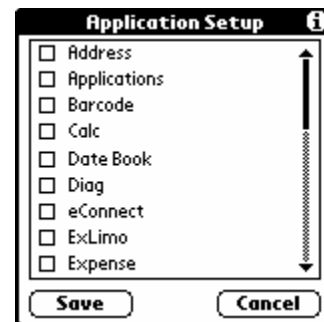


Figure 10 Application Setup

5. Check **Memo Pad** and then tap **Save**.

To verify successful installation and configuration, start Memo Pad and scan any of the symbologies you checked above; the scanned data will be displayed.

## Optional Code to Enable/Disable Scan Wedge

---

The sample code below can be integrated into some high level languages that do not provide an interface to the scanner, enabling them to have control over the scanner operation.

### SAMPLE CODE

The sample can also be use to turn the Wedge on or off by calling it with the proper startup code. **0x9002** enables the Wedge; **0x9000** closes the Wedge.

#### Use this code to disable the Scan Wedge:

First send the wedgeCloseSMEvent to tell the ScanWedge to close the ScanMgr.

```
// Make sure the Wedge has the ScanLib closed.
MemSet( &myEvent, sizeof(myEvent), 0 );
myEvent.eType = (eventsEnum) wedgeCloseSMEvent;
EvtAddEventToQueue ((EventPtr)&myEvent);
```

Wait for the wedgeSMClosedEvent to know that the wedge has closed the ScanMgr

```
// Get the next available event.
EvtGetEvent(&event, evtWaitForever);

// If the Wedge is telling us it has closed the ScanMgr lib then we
// must be trying to start our app. Open the ScanMgr, and go to
// our MainForm.
if ( event.eType == wedgeSMClosedEvent) {
    error = ScanOpenDecoder();          // open the scan manager library
    if (!error)
        bOpenDecoderOK = true; // set global variable that all is well
    else
        FrmAlert( OpenFailedAlert );
    // Initialize and draw the main form.
    FrmGotoForm( MainForm );
    continue;
}
```

**Use this Code to enable the Scan Wedge:**

Tell the scan wedge to open the ScanMgr send the wedgeOpenSMEvent.

```
MemSet( &myEvent, sizeof(myEvent), 0 );  
myEvent.eType = (eventsEnum) wedgeOpenSMEvent;  
EvtAddEventToQueue ((EventPtr)&myEvent);
```