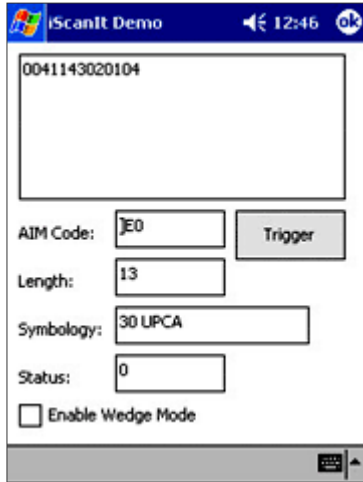


iScanIt™ bar code scanning for your mobile application



iScanIt is a custom ActiveX Control designed to control bar code scanning on mobile data collection devices for inventory control, warehouse management, sales, identification, and other data collection activities.

Advantages

- Completely scalable – Enables complete scanning solutions with as little as one line of code
- Easy migration between device manufacturers
- Works on desktop PCs with serial tethered handheld scanners
- Compatible with Visual Basic, C++, Microsoft® Internet Explorer, and other tools
- Compatible with all Symbol Technologies mobile devices, including X-86 embedded platforms
- Enables the application to be truly thin, eliminating the need for costly middleware and development tool licenses

How iScanIt Works

The **iScanIt Scan Control** is an “invisible” lightweight scan control that runs on most Microsoft® Windows® CE mobile devices or on your desktop PC. Developers can integrate bar code scanning into their applications with minimal effort and produce a GUI that is NOT restricted to a text/edit box.

Use **iScanIt** alone or with bundled ActiveX “scan-aware” controls:

- Filter Control
- List Box
- Text Edit Box

Design-time functions include:

- Selecting symbology types
- Choosing audible or visual feedback
- Activating scanner
- Decoding received data
- Handling scan events

Minimum Requirements

- Desktop PC with Windows® 98 or above installed
- One of these tools installed on the desktop PC:
 - eMbedded Visual Tools (eVB, eVC++)
 - Visual Studio 6.0
 - Visual InterDev 6.0
- Mobile handheld, Microsoft Windows CE 2.12 or later (eMbedded and/or Windows Mobile®)
- **iScanIt** installed on your handheld device or desktop PC

Contact Us

InVision Software, Inc.
110 Lake Ave South, Suite 35
Nesconset, NY 11767
Phone: (631) 360-3400
Email: sales@invisionsoft.com
URL: www.invisionsoft.com



InVision Software, Inc. has been supplying software development tools that simplify the integration of specialized technologies such as bar code scanning, signature capture, WLAN, and peripherals—including communication cradles and Credit/Debit card readers—since 1995. InVision has expanded its software development capabilities to include software application development for mobility solutions for PDAs—including batch, WLAN, and WWAN-enabled mobile devices—and is a pioneer in the development of pervasive software for all OEM handheld and portable PC platforms.

Specifications are subject to change without notice. All product and company names are trademarks, service marks, or registered trademarks of their respective owners. Contact InVision Software for system, product, or services availability and specific information.