

iDockIt™

User Guide



**Support for Microsoft® Windows Mobile® 5.0
and Microsoft® Windows® CE® 5.0**

**110 Lake Avenue South, Suite 35
Nesconset, NY 11767
(631) 360-3400 FAX (631) 360-3268
Website: <http://www.invisionsoft.com>**

Document Information

Document Version: Ver. 1.0

As of: 3/28/2006 12:11 PM

Classification: Proprietary

Release Date: March 28, 2006

Document ID: iDockItUserGuide_50.doc

ABOUT THIS USER GUIDE

This user guide provides an overview of installing and setting up **iDockIt™** on Symbol® MC9090 handheld terminals running Microsoft® Windows Mobile® 5.0 or Microsoft® Windows® CE 5.0. For specific information on setting up and using connections, refer to the documentation for the terminal.

REVISION HISTORY

Document Identifier	Date	Description
iDockItUserGuide_50.doc	03/12/04	Ver. 0.1 Draft
iDockItUserGuide_50.doc	12/8/05	Ver. 0.2 Draft
iDockItUserGuide_50.doc	3/6/06	Ver. 1.0
iDockItUserGuide_50.doc	3/28/06	Ver. 1.1

New in this Version

- Version 1.1 – Adds support for Reconnect Delay setting for Microsoft® Windows Mobile® 5.0.
- Version 1.0 – Adds support and minor changes for Windows® CE 5.0 to more fully support on-board help.
- Version 0.2 – Support for Microsoft® Windows® CE 5.0. The next version will include updated support for Microsoft® Windows Mobile® 5.0.
- Version 0.1 – Support for Microsoft® Windows® Pocket PC 2002.

Notice

Copyright © 2006 InVision Software, Inc. All rights reserved.

All rights reserved. This document in full or in part may not be copied, photocopied, reproduced, translated, or reduced to any electronic medium or machine readable form without the prior written consent of InVision Software, Inc. The information contained in this document constitutes proprietary information which is the property of InVision Software, Inc. and is protected by copyright. It may only be used for the purposes intended. Distribution of this information is made to customers and prospective customers of InVision Software, Inc. for the sole purpose of assisting in the use and understanding of an InVision Software, Inc. product.

InVision Software, Inc. makes no warranty of any kind with regard to this material, including, but not limited to, the documentation, function, and performance of these systems, and their suitability for any particular purpose. Further, InVision Software, Inc. reserves the right to revise this publication and to make changes to it from time to time without obligation to notify any person or organization of such revision or changes. InVision Software, Inc. shall not be liable for any errors contained herein or for incidental or consequential damages in connection with the furnishing, performance, or use of this manual, the software, or the hardware of this system.

Trademarks

iDockIt™ is a trademark of InVision Software, Inc.

Other product names mentioned in this manual may be trademarks or registered trademarks of their respective companies and are hereby acknowledged.

Contacts

For system, product, or services availability and specific information, please contact us at: info@invisionsoft.com

Contents

INTRODUCTION.....	5
About iDockIt™	5
INSTALLATION.....	6
Requirements	6
For Windows Mobile® 5.0 Devices	6
For Windows® CE 5.0 Devices	6
CONFIGURING IDOCKIT FOR WINDOWS MOBILE® 5.0.....	7
Quick Start.....	9
General Setup Options	11
Ethernet Cradle Settings	14
Direct (Serial/USB) Settings.....	16
Modem Cradle Settings	18
CONFIGURING IDOCKIT FOR WINDOWS® CE 5.0	21
Quick Start.....	22
General Setup Options	25
Ethernet Cradle Settings	28
Direct (Serial/USB) Settings.....	30
Modem Cradle Settings	32
UNINSTALLING IDOCKIT	35
From Windows Mobile® 5.0 Devices	35
From Windows® CE 5.0 Devices	35

Figures

Figure 1: Today Screen showing iDockIt Menu	7
Figure 2: General Settings Tab.....	11
Figure 3: Status Tab	13
Figure 4: Ethernet Settings Tab	14
Figure 5: Direct (Serial/USB) Settings Tab.....	16
Figure 6: Modem Settings Tab	18
Figure 7: iDockIt menu displayed from System Tray	21
Figure 8: General Settings Tab.....	25
Figure 9: Status Tab	27

Figure 10: Ethernet Settings Tab..... 28
Figure 11: Direct (Serial/USB) Settings Tab..... 30
Figure 12: Modem Settings Tab 32

Introduction

About iDockIt™

iDockIt™ manages the activities that can occur when you connect the MC9090 handheld terminal to a PC using a cradle (Ethernet, modem, serial, USB) or USB or serial cable. iDockIt can enable the terminal to connect automatically to a PC, network, or the Internet and then exchange information or launch an application. iDockIt lets you establish settings for each type of connection.

This user guide provides an overview of installing and configuring iDockIt™ on MC9090 handheld terminals running Windows Mobile® 5.0 and Windows® CE 5.0.

General iDockIt options let you:

- Enable or disable iDockIt; if enabled, keep iDockIt running in the background.
- Display status and cradle settings when you cradle your terminal.
- Define whether iDockIt should wait before connecting or reconnecting your terminal to the PC or network and if waiting, the number of seconds to delay.
- Disable specific error dialogs.

Connection-specific options let you define what iDockIt should do when you cradle or connect your terminal, including:

- Launch Microsoft® ActiveSync® to synchronize with a PC.
- Establish a connection to your network.
- Launch an application after establishing a network connection.
- Establish a connection via a specified modem.

Notes:

- iDockIt settings and options control cradle events only while iDockIt is running.
- You cannot use ActiveSync 4.0 or later to synchronize data between a PC and a Windows CE based device through an Ethernet cradle.

Installation

Requirements

Download the appropriate .cab file from the Developer Downloads section of the Symbol Technologies Developer Zone: <http://devzone.symbol.com> or from InVision Software: <http://www.invisionsoft.com> to your PC.

.cab File	Platform
iDockIt.CE50ARMV4I.CAB	Microsoft® Windows® CE 5.0
iDockIt.WM5PPCArmV4I.CAB	Microsoft® Windows Mobile® 5.0

For Windows Mobile® 5.0 Devices

1. Copy the .cab file **iDockIt.WM5PPCArmV4I.cab** to the terminal.
2. In **File Explorer** on the terminal, locate the .cab file.
3. Tap the file once and follow any displayed instructions. We recommend that you choose **Device** as the install location.
4. Close **File Explorer**.
5. To run iDockIt for the first time, tap **Start > Programs** from the Today screen and then tap the iDockIt icon.

For Windows® CE 5.0 Devices

1. Copy the .cab file **iDockIt.CE50ARMV4I.cab** to the terminal.
2. In **Windows Explorer** on the terminal, locate the .cab file.
3. Double-tap the .cab file.
4. The Windows Install dialog will be displayed. Do not choose a destination folder or modify the **Name** field.
5. Tap **OK** at the top of the dialog. iDockIt will be installed automatically. The .cab file will be removed automatically from the terminal when installation is complete.
6. Close **Windows Explorer**.
7. To run iDockIt, tap **Start > Programs > iDockIt**.

Note: Cold-starting your terminal will remove iDockIt.

Configuring iDockIt for Windows Mobile® 5.0

To run iDockIt for the first time, tap **Start > Programs** from the Today screen and then tap the iDockIt icon; iDockIt will open to the General tab. Thereafter, if you need to restart iDockIt, tap **Start > iDockIt** from the Today screen.

When iDockIt is running, you will see its icon  at the bottom of the Today screen. Tap the icon to display the iDockIt menu.

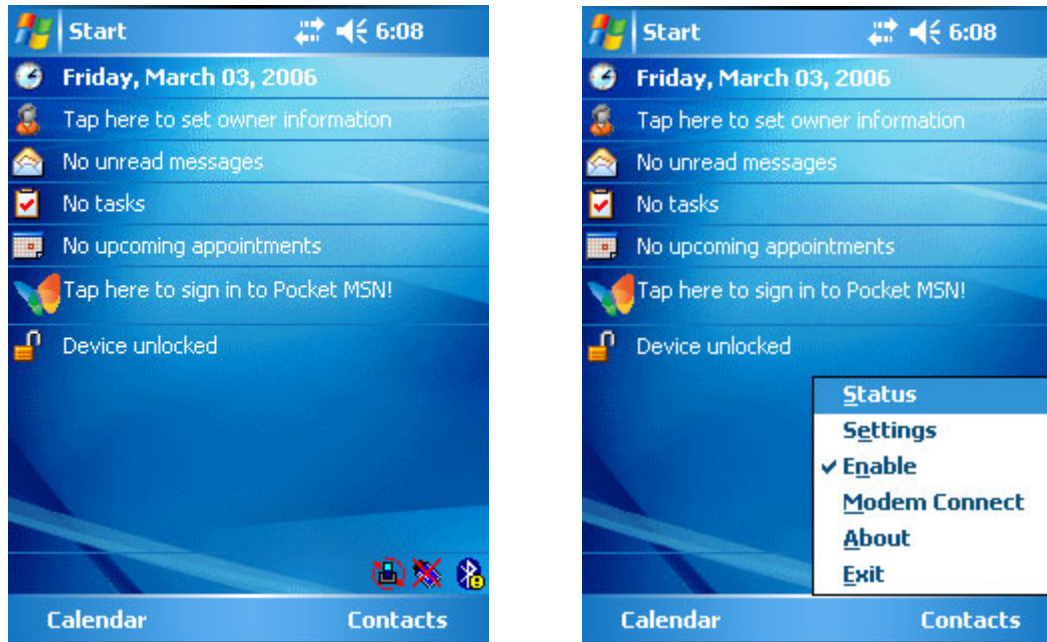


Figure 1: Today Screen showing iDockIt Menu

- **Status** displays the Status tab.
- **Settings** displays the Settings tab for the current connection or, if the terminal is not connected to a PC via a cable or cradle, the most recently viewed settings tab.
- **Enable** is a toggle switch that checks/unchecks the **Enable iDockIt** setting on the General tab.
- **Modem Connect** is enabled when you have defined a modem connection in the modem settings tab. Tapping this item when the terminal is in the modem cradle will initiate dial-out.
- **About** displays version and copyright information.
- **Exit** disables iDockIt and closes the application.

iDockIt includes five tab pages:

General – General setup options for enabling/disabling iDockIt and displaying status and other information.

Ethernet – Settings for what iDockIt should do when it detects that the terminal is in an Ethernet cradle.

Direct – Settings for what iDockIt should do when it detects that the terminal is in a Serial or USB cradle or connected to a desktop PC using a Serial or USB cable.

Modem – Settings for what iDockIt should do when it detects that the terminal is in a Modem cradle.

Status – Current connection status, continuously updated, scrollable window.

Quick Start

Follow these guidelines. Refer to sections of this document devoted to individual tabs for details on settings and options.

HOW TO START IDOCKIT

To start iDockIt the first time, tap **Start > Programs > iDockIt**. Thereafter, tap **Start > iDockIt**.

HOW TO ENABLE IDOCKIT TO MANAGE CONNECTIONS

On the iDockIt General tab, check **Enable iDockIt** to enable iDockIt to control cradle events. When you cradle your handheld terminal, iDockIt will identify the cradle and perform the activities you have configured for it.


To connect automatically to your PC or network:

1. Tap the iDockIt General tab.
2. Check **Enable iDockIt**.
3. **Display status when cradled** can be checked or unchecked.
4. **Display settings when cradled** can be checked or unchecked; the **Autoconnect** setting is also optional.
5. Tap the iDockIt tab that corresponds to your cradle type and check **Establish network connection** and optionally **Launch application**.

To connect manually to your PC or network

While iDockIt is designed to connect your terminal to a specified PC or network automatically, you can also choose your connection manually whenever you cradle your terminal.

1. Tap the iDockIt General tab.
2. Check **Enable iDockIt**.
3. **Display status when cradled** can be checked or unchecked.
4. Check **Display settings when cradled**. When you cradle your terminal, the Settings tab will be displayed automatically.
5. Uncheck the **Autoconnect** option.
6. Tap the iDockIt tab that corresponds to your cradle type.
7. Check **Establish network connection** and optionally **Launch application**.

When you cradle your terminal, iDockIt will display the settings tab corresponding to the cradle you are using. Choose the type of connection you need and tap . Another way to connect manually is to establish new connection settings before you cradle your terminal.

To launch an application when you connect:

1. Tap the iDockIt General tab.
2. Check **Enable iDockIt**.
3. Tap the tab that corresponds to the type of cradle you are using.

4. Select a connection option as described above.
5. Tap **Launch application**.
6. Tap **Select** and select the application you want to launch when you place your terminal in the cradle. Enter any necessary program arguments.
7. Tap **OK**.


The selected application will appear in the settings tab.

To determine your terminal's connection status

Tap the iDockIt Status tab.

- **Dock Status** will show either **Docked** and identify the type of connection (Serial, Ethernet, USB) when you have cradled your terminal or **Not docked** when you remove your terminal from the cradle.
- **Connection** will show the name of the connection,
- When your terminal is cradled, **IP addresses** will show all valid IP addresses assigned to the terminal. If your terminal is not cradled, this field will show either the **IP address** of your network adapter or, if you do not have a network connection, a default IP address.
- The **Status** window will show all cradle events that have occurred since the last time you cradled the terminal.

MINIMIZE IDOCKIT

To minimize iDockIt, tap  in the upper right corner of the screen. iDockIt will control cradle events while it is minimized.

EXIT IDOCKIT

To close the application, tap **File > Exit**. iDockIt will not control cradle events when it is closed.

General Setup Options

Settings on the General tab complement the options you set for your cradle.

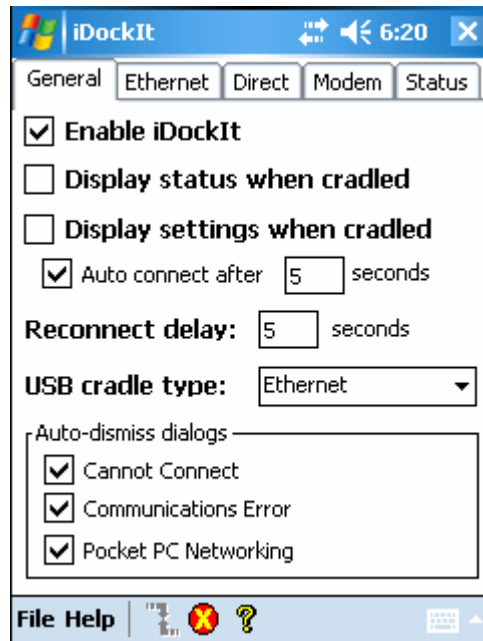


Figure 2: General Settings Tab

ENABLE IDOCKIT

Check this option to enable iDockIt to control cradle events. When you cradle your handheld terminal, iDockIt will identify the type of cradle and perform the activities you have configured.



DISPLAY STATUS WHEN CRADLED

Check this option to display the iDockIt Status tab when you cradle your terminal.

If you also checked **Display settings when cradled**, you will first see the Settings tab for the type of cradle detected and then the Status tab after the specified time elapses.

DISPLAY SETTINGS WHEN CRADLED

Check this option to display the cradle settings tab when you cradle your terminal. You can also check **Auto connect after x seconds** to automatically make the connection defined on the cradle tab after a specific delay. The delay gives you the opportunity to review/change connection options.

During this waiting period, you can select either  or  in the menu bar to connect immediately or cancel automatic connection.

Warning: If **Display settings when cradled** is checked and **Auto connect after** is not checked, iDockIt will only display the cradle settings tab when you cradle your terminal and will not attempt to connect to your network.

RECONNECT DELAY

If iDockIt is configured to establish a connection when cradled and the connection is lost, iDockIt will attempt to re-establish the connection if the terminal is still cradled (external power from the cradle is present). The Reconnect delay is used to specify the number of seconds iDockIt should wait after a connection is lost before attempting to reconnect.

USB CRADLE TYPE

When placed into a USB cradle, iDockIt needs to know whether the cradle directly connects to a PC or if the cradle connects to your network via an Ethernet cable.

If you are using iDockIt to synchronize with a PC using ActiveSync via USB cable or cradle, select **Direct**.

If you are using iDockIt to connect to your network through an Ethernet cradle, select **Ethernet**.

AUTO-DISMISS ERROR DIALOGS

You can configure iDockIt to dismiss several error messages that might be displayed as iDockIt makes the connection you have defined. These messages do not require any action. To auto-dismiss a message, tap the checkbox next to its title. If the message occurs during a connection attempt, iDockIt will OK it on your behalf and the event will appear in the Status window.

Cannot Connect

The answering modem has disconnected. To check your connection settings and change them if needed, tap Settings.

What this message means: This message may be displayed when you remove the terminal from a cradle, breaking the connection. Tapping **Settings** would display the Pocket PC **Connections** dialog. Since you should not need to change these settings, the error message can be dismissed automatically.

Communications Error

Cannot start communications with the desktop computer. Reconnect your terminal. If the problem persists, see Microsoft ActiveSync Help.

What this message means: This message is displayed when ActiveSync® attempts to connect to a PC and synchronize data but cannot find the computer name. Since this message may appear in the course of a successful connection attempt, it can be dismissed automatically.

Pocket PC Networking

Unable to obtain a server-assigned IP address. Try again later or enter an IP address in Network settings.

What this message means: If your terminal has a wireless network adapter, this dialog may appear periodically when the terminal is out of network range. The message has nothing to do with your connection through a cradle or cable and can therefore be dismissed automatically.

STATUS TAB

If iDockIt is enabled when you cradle/connect your terminal, the Status tab displays connection-related events as they occur. To display this tab automatically whenever you cradle/connect your terminal, check **Display status when cradled** on the General tab.

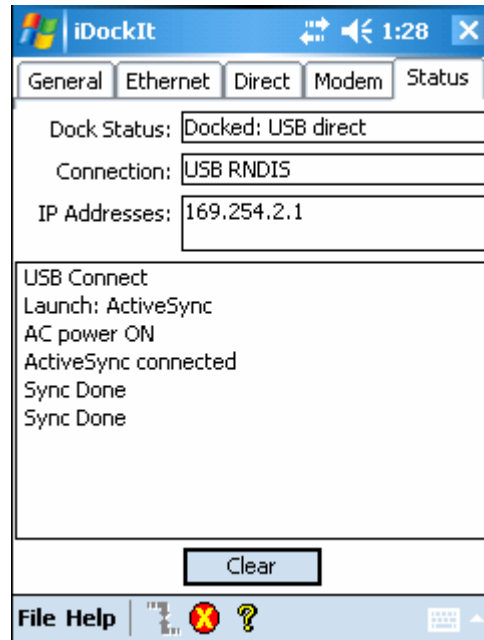


Figure 3: Status Tab

The **Dock Status** field shows **Docked** and identifies the type of connection (Serial, Ethernet, USB) when you have cradled your terminal or **Not docked** when you remove your terminal from the cradle.

The **Connection** field shows the name of the connection.

When you have cradled your terminal, the **IP addresses** field shows all valid IP addresses assigned to the terminal. When the terminal is not cradled, this field shows either the IP address of your network adapter or, if you do not have a network connection, a default IP address.

The **Status** window displays a scrolling list of cradle events as they occur, including:

- AC power ON and OFF as you cradle/uncradle the terminal.
- **Carrier detect**, baud rate, and **(cradle type) connect** when iDockIt identifies the cradle and connection speed.
- **Launch (application)** when iDockIt launches the selected application, followed by confirmation when the application has been launched successfully.
- **Sync done** when synchronization has completed successfully.
- **Dismiss (error message)** when iDockIt dismisses a message you have designated.
- **Dock event complete** when iDockIt has completed all defined tasks. If you uncradle your terminal before this item appears, regardless of dock status, you may interrupt assigned tasks.

Tap **Clear** to empty all events from the Status tab.

Ethernet Cradle Settings

If you are using an Ethernet cradle, you can establish an Internet or Intranet connection to your network and/or launch a specified application on your terminal.

Note: You cannot use ActiveSync 4.0 or later to synchronize data between a PC and a Windows CE based device through an Ethernet cradle.

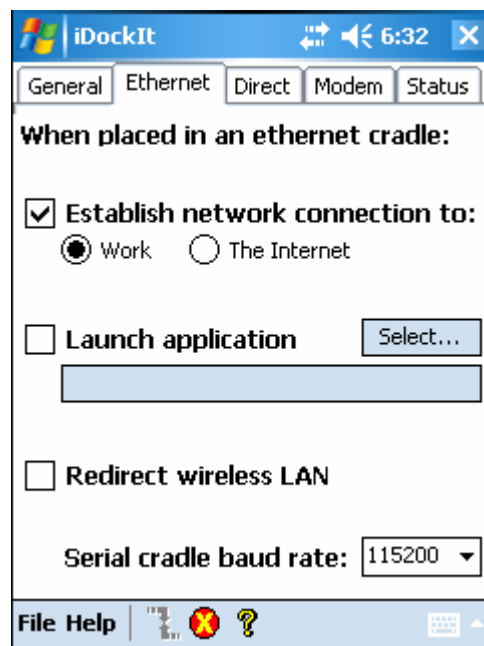


Figure 4: Ethernet Settings Tab

ESTABLISH NETWORK CONNECTION

Check this option to have iDockIt establish a network connection when you cradle your terminal.

You can check this option in conjunction with **Launch application**. After iDockIt establishes the network connection, it will launch the specified application.

LAUNCH APPLICATION

Check this option to have iDockIt launch the selected application when you cradle the terminal. iDockIt will use the specified command line parameters. You must select an application to launch.

Select...

1. Tap the **Select** button to open the **Select Auto-Launch Application** dialog.
2. Select a **File Type** in the drop-down list.
3. Select a **Folder** (as needed).
4. Select a file name in the list.
5. Use the input panel to specify command line parameters.

6. Tap **OK** at the top of the screen.

The selected application will appear in the settings tab.

SERIAL CRADLE BAUD RATE

This option allows you to specify the baud rate iDockIt should use for a serial connection to the Ethernet cradle. Set this rate to match the baud rate configured for the cradle. For maximum performance, always use the maximum baud rate of 115200.

If using a USB-to-Ethernet cradle, the USB driver automatically determines the connection speed.

Direct (Serial/USB) Settings

If you use a serial or USB cradle OR connect to your terminal with a serial or USB cable, you can automatically synchronize with the connected PC. Alternatively, if your PC supports RAS connections you can connect to a network through a PC and/or launch a specified application on your terminal.

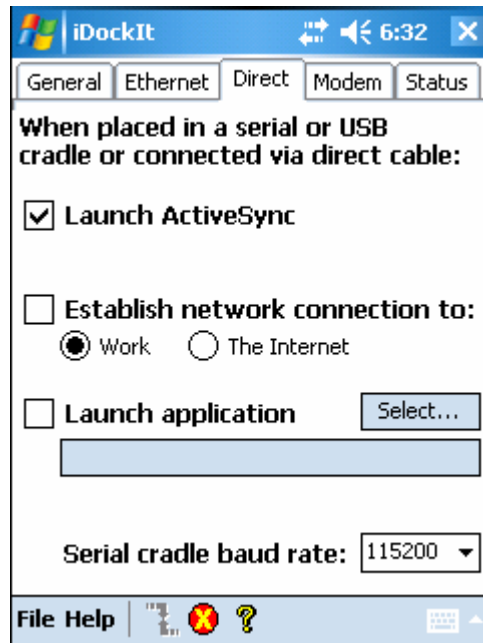


Figure 5: Direct (Serial/USB) Settings Tab

LAUNCH ACTIVE SYNC

Check this option to have iDockIt launch ActiveSync® when you place your terminal in a serial or USB cradle or when you connect it to a serial or USB cable. If your terminal has a partnership with the PC to which you are connected, ActiveSync will automatically synchronize with the PC.

Notes: Checking this option automatically unchecks **Establish network connection** and **Launch application**. Similarly, checking either one of those options automatically unchecks **Launch ActiveSync**.

ESTABLISH NETWORK CONNECTION

Check this option to have iDockIt establish a connection to your network when you place your terminal in a serial or USB cradle or connect it to a serial or USB cable. In order to establish a connection to your network, you must connect the terminal to a PC with a RAS server.

If you check this option, **Launch ActiveSync** is automatically unchecked.

You can check this option in conjunction with **Launch application**. After iDockIt establishes the network connection, it will launch the specified application.

LAUNCH APPLICATION

Check this option to have iDockIt launch the selected application when you place your terminal in a serial or USB cradle or connect it to a serial or USB cable. iDockIt will use the specified command line parameters. You must select an application to launch.

Select...

1. Tap the **Select** button to open the **Select Auto-Launch Application** dialog.
2. Select a **File Type** in the drop-down list.
3. Select a **Folder** (as needed).
4. Select a file name in the list.
5. Use the input panel to specify command line parameters.
6. Tap **OK** at the top of the screen.

The selected application will appear in the settings tab.

SERIAL CRADLE BAUD RATE

This option allows you to specify the baud rate iDockIt should use for a serial cable or cradle. Set this rate to match the PC that the cradle or cable is connected to.

If you are using a USB cradle or cable, the USB driver automatically determines the connection speed.

Modem Cradle Settings

If you use a modem cradle, you can automatically connect to a remote PC or network OR you can synchronize with a PC with which you have set up a partnership using ActiveSync®. Alternatively, you can connect to your network and/or launch a specified application on your terminal.

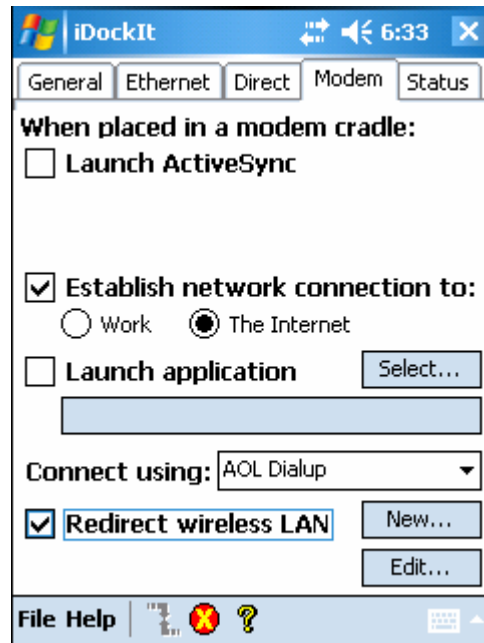


Figure 6: Modem Settings Tab

LAUNCH ACTIVE SYNC

Check this option to have iDockIt launch ActiveSync® when you place your terminal in a modem cradle.

Notes: Checking this option automatically unchecks **Establish network connection** and **Launch application**. Similarly, checking either one of those options automatically unchecks **Launch ActiveSync**.

ESTABLISH NETWORK CONNECTION

Check this option to have iDockIt establish a network connection when you place your terminal in a modem cradle. iDockIt will use the modem connection specified in the **Connect using** list in this tab.

If you check this option, **Launch ActiveSync** is automatically unchecked.

You can check this option in conjunction with **Launch application**. After iDockIt establishes the network connection, it will launch the specified application.

LAUNCH APPLICATION

Check this option to have iDockIt launch the selected application when you place your terminal in a modem cradle. iDockIt will use the specified command line parameters. You must select an application to launch. If **Establish network connection** is checked, the application will not be launched until a connection is successfully established.

SELECT...

1. Tap the **Select** button to open the **Select Auto-Launch Application** dialog.
2. Select a **File Type** in the drop-down list.
3. Select a **Folder** (as needed).
4. Use the input panel to specify command line parameters.
5. Select a file name in the list.
6. Tap **OK** at the top of the screen.

The selected application will appear in the settings tab.

CHOOSE CONNECTION

The **Connect using** drop-down list includes all modem connections that you have defined for your terminal. Choose the one you wish to use.

If you check the General settings options to **Display settings when cradled** and **Auto-connect after x seconds**, you will have an opportunity to select the appropriate modem connection when you cradle your terminal.

If you do not check the above options, iDockIt will use the last modem connection you selected.

Tap **New** to create a new modem connection.

Tap **Edit** to change the settings of an existing modem connection.

Tap **Delete** to delete the currently displayed modem connection.

CREATE A NEW MODEM CONNECTION

1. Get the following information from your ISP or network administrator: dial-up access telephone number, user name, password, domain name, and TCP/IP settings.
2. Tap **New** below the **Connect using** list.
3. Enter a name for the connection.
4. In the Modem list, tap your modem type. For the modem cradle, tap **Hayes Compatible on COM1**.
5. Tap **Configure** and change any Port Settings in the Connection Properties dialog, depending on requirements for your modem.
6. Tap **Next** after entering the connection name and choosing a modem.
7. Enter the access phone number and then tap **Next**.
8. Enter Login information (user name, password, and domain name) and then tap **Next**.
9. You should not need to change any TCP/IP settings unless directed by your ISP or network administrator. Tap **Next** and then tap **Finish** in the next server address dialog.

The new modem connection will be in the drop-down list.

EDIT AN EXISTING MODEM CONNECTION

1. In the **Connect using** list, select the modem connection you need to modify.
2. Tap **Edit**.


3. In the **Connection Properties** dialog, make any necessary changes to the connection name, modem, or modem configuration options. Tap **Next** to continue or **OK** to close the dialog.
4. If you continue, you can change the access phone number. Tap **Next** to continue or **OK** to close the dialog.
5. If you continue, you can change your login information. If you need to make any TCP IP setting changes, tap **Next**. Otherwise, tap **OK** to close the dialog.

DELETE AN EXISTING MODEM CONNECTION

1. In the **Connect using** list, select the modem connection you want to delete.
2. Tap and hold the **Connect using** box until the pop-up menu is displayed.
3. Select **Delete** from the pop-up menu.
4. A dialog is displayed prompting you to conform that you want to delete the modem connection. Tap **Yes**.

The modem connection will be removed from the drop-down list.

Configuring iDockIt for Windows® CE 5.0

To run iDockIt, tap **Start > Programs > iDockIt**. When iDockIt is running, you will see its icon  in the System Tray. Tap the icon to display the iDockIt menu.

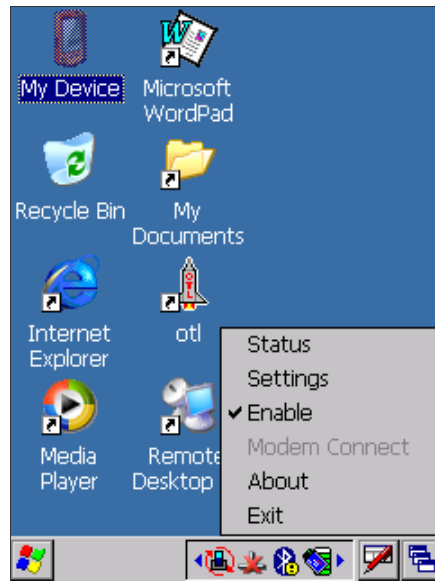


Figure 7: iDockIt menu displayed from System Tray

- **Status** displays the Status tab;
- **Settings** displays the settings tab for the current connection.
- **Enable** is a toggle switch that checks/unchecks the **Enable iDockIt** setting on the General tab.
- **Modem Connect** is enabled when you have defined a modem connection in the modem settings tab. Tapping this tab when the terminal is in the modem cradle will initiate dial-out.
- **Exit** disables iDockIt and closes the application.

iDockIt includes five tab pages:

General – General setup options for enabling/disabling iDockIt and displaying status and other information.

Ethernet – Settings for what iDockIt should do when it detects that the terminal is in an Ethernet cradle.

Direct – Settings for what iDockIt should do when it detects that the terminal is in a Serial or USB cradle or connected to a desktop PC using a Serial or USB cable.

Modem – Settings for what iDockIt should do when it detects that the terminal is in a Modem cradle.

Status – Current connection status, continuously updated, scrollable window.

Quick Start

Follow these guidelines. Refer to sections of this document devoted to individual tabs for details on settings and options

HOW TO PREPARE YOUR TERMINAL TO CONNECT

Using Microsoft® ActiveSync®, make sure you have established a partnership between your terminal and the PC. This should happen the first time you cradle your terminal. If you will be using an Ethernet cradle, you must set up the partnership with the PC using a serial or USB cable or cradle.

For more information, see ActiveSync Help on the PC.

HOW TO START IDOCKIT

Tap **Start > Programs > iDockIt**. The General tab is displayed.

HOW TO ENABLE IDOCKIT TO MANAGE CONNECTIONS

On the iDockIt General tab, check **Enable iDockIt**. iDockIt will make connections and carry out tasks according to the settings you have defined for each cradle type until you uncheck this option or Exit.

To connect automatically to your PC or network:


1. Tap **Enable iDockIt** in the General tab.
2. **Display status when cradled** can be checked or unchecked.
3. **Display settings when cradled** can be checked or unchecked; the **Autoconnect** setting is also optional.
4. Tap the iDockIt tab that corresponds to your cradle type.
 - a. For an Ethernet Cradle, check **Launch ActiveSync** and select the PC you want to connect to.
 - b. For a Direct connection using a USB cradle/cable, serial cable/cradle, or for a Modem cradle, check **Launch ActiveSync**; if you wish to connect to a PC other than the one to which you are physically connected, check **Sync with** and choose the PC in the list. (In ActiveSync Connections, select "Allow serial...connection" and "Allow network...connection.")
 - c. To connect to a network using any type of cradle, tap **Establish network connection**.

To connect manually to your PC or network:

While iDockIt is designed to connect your terminal to a specified PC or network automatically, you can also choose your connection manually whenever you cradle your terminal.

1. Tap **Enable iDockIt** in the General tab.
2. **Display status when cradled** can be checked or unchecked.
3. Check **Display settings when cradled**. When you cradle your terminal, the settings tab for that cradle will be displayed automatically.
4. Uncheck the **Autoconnect** option.

5. Tap the iDockIt tab that corresponds to your cradle type.
6. Check **Launch ActiveSync** and/or
7. Check **Establish network connection** and optionally **Launch application**.

When you cradle your terminal, iDockIt will display the settings tab corresponding to the cradle you are using. Choose the type of connection you need and tap . Another way to connect manually is to establish new connection settings before you cradle your terminal.

To launch an application when you connect:


1. Tap the iDockIt General tab.
2. Check **Enable iDockIt**.
3. Tap the tab that corresponds to the type of cradle you are using.
4. Tap **Launch Application**.
5. Tap **Select** and select the application you want to launch whenever your terminal is connected to a PC or network. Enter any necessary program arguments.
6. Tap **OK**.

To determine your terminal's connection status

Tap the iDockIt Status tab.

- **Dock Status** will show either **Docked** or **Not docked**.
- **Connection** will show either the name of the connection or **Not connected**.
- If your terminal is cradled, **IP address** will show all valid IP addresses assigned to the terminal. If your terminal is not cradled, **IP address** will show the IP address of your network adapter(s) or, if you do not have a network connection, a default address.
- The Status window will show all cradle events that have occurred since the last time you cradled the terminal.

MINIMIZE IDOCKIT

To minimize iDockIt, tap  in the upper right corner of the screen. iDockIt will control cradle events while it is minimized.

EXIT IDOCKIT

To close the application, tap **File > Exit**. iDockIt will not control cradle events when it is closed.

GENERAL RECOMMENDATIONS

Your terminal should not be cradled or connected when the PC to which it is physically connected is started or restarted. If your terminal is cradled when the PC is started/restarted, the terminal will attempt to connect before ActiveSync has fully loaded and a proper connection will be impossible. Follow these general guidelines for avoiding connection problems:

- Connect only one terminal to the PC at a time. (You can have more than one serial cable/cradle or USB cable/cradle connected simultaneously.)

- When you start or restart the PC, wait for the start process to finish completely before cradling a terminal. When you cradle the terminal, it will be able to make the connection defined in iDockIt settings.
- If your terminal was connected to the PC when the PC was started, remove your terminal from its cradle, restart the PC, and then return the terminal to its cradle.
- Performing a soft reset on your terminal can be useful. Remove your terminal from its cradle before doing a soft reset. Restart iDockIt and then recradle your terminal.
- For additional information, refer to Microsoft® ActiveSync® Help on your PC.

General Setup Options

Settings on the General tab complement the options you set for your cradle.

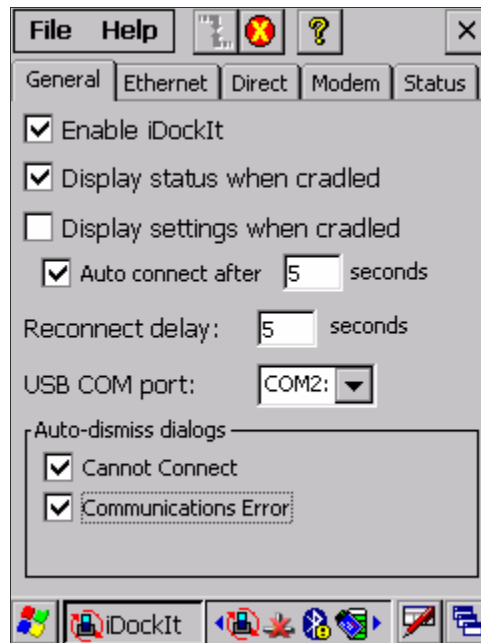


Figure 8: General Settings Tab

ENABLE IDOCKIT

Check this option to enable iDockIt to control cradle events. When you cradle your handheld terminal, iDockIt will identify the type of cradle and perform the activities you have configured.

Uncheck this option to restore control of cradle events to Microsoft® ActiveSync®.

DISPLAY STATUS WHEN CRADLED

Check this option to display the iDockIt Status tab when you cradle your terminal.



If you also checked **Display settings when cradled**, you will first see the settings tab for the type of cradle detected and then the Status tab after the specified time elapses.

Uncheck this option to prevent display of the iDockIt Status tab when you cradle your terminal.

DISPLAY SETTINGS WHEN CRADLED

Check this option to display the cradle settings tab when you cradle your terminal.

You can also check **Auto connect after x seconds** to have iDockIt wait a specified time before creating a connection. The delay gives you the opportunity to review/change cradle settings.

During this waiting period, you can select either  or  in the menu bar to connect immediately or cancel automatic connection.

Warning: If you do not check this option (or if you check this option but do not specify the number of seconds), iDockIt will display the cradle settings tab when you cradle your terminal but will not attempt to establish a connection.

Uncheck this option to prevent display of the cradle settings tab.

RECONNECT DELAY

This feature has not been implemented.

USB COM PORT

The first time you run iDockIt, the application will attempt to determine whether your terminal has a USB port and if so, the COM port to which it is mapped.

If iDockIt does not find a USB port, **None** will be displayed. You can then choose from all available COM ports in the list. In most cases, you should not have to change this setting.

AUTO-DISMISS ERROR DIALOGS

You can configure iDockIt to dismiss several error dialogs that might be displayed. To auto-dismiss an error message, tap the check box next to its title. If the message occurs during a connection attempt, iDockIt will **OK** it on your behalf and the event will appear in the Status window.

Port Disconnected

Cannot start communications with the desktop computer. The connection was terminated.

What this message means: This message is displayed when you remove the terminal from a cradle, breaking the connection. Since this is not really an error, the message can be dismissed automatically.

Communications Error

Cannot start communications with the desktop computer. The computer is either not available or busy and currently cannot accept connections.

What this message means: This message is displayed when ActiveSync® attempts to connect to a PC and synchronize data but cannot find the computer name. Since this message may appear in the course of a successful connection attempt, it can be dismissed automatically.

STATUS TAB

If iDockIt is enabled when you cradle your terminal, the Status tab displays connection-related events as they occur. Check **Display status when cradled** on the General tab if you want iDockIt to display this tab automatically whenever you cradle your terminal.

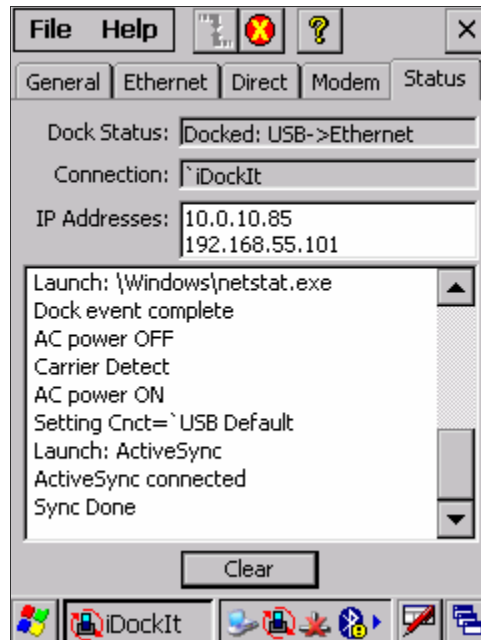


Figure 9: Status Tab

The **Dock Status** field shows **Docked** and identifies the type of connection (Serial Direct, Modem, Ethernet, USB). The field shows **Not docked** when you remove your terminal from the cradle.

The **Connection** field shows either the name of your connection or **Not connected**.

The **IP addresses** field shows all valid IP addresses assigned to the terminal. When the terminal is not cradled, this field shows either the IP address of your network adapter or, if you do not have a network connection, a default IP address.

The **Status** window displays a scrolling list of cradle events as they occur, including:

- **AC power ON** and **OFF** as you cradle/uncradle the terminal.
- **Carrier detect**, baud rate, and **(cradle type) connect** when iDockIt identifies the cradle and connection speed.
- **Launch (application)** when iDockIt launches an application, followed by confirmation when the application has been launched successfully.
- **Sync done** when synchronization has completed successfully.
- **Dismiss (error message)** when iDockIt dismisses a message you have designated.
- **Dock event complete** when iDockIt has completed all defined tasks. If you uncradle your terminal before this item appears, regardless of dock status, you may interrupt assigned tasks.

Tap **Clear** to empty all events from the Status window.

Ethernet Cradle Settings

If you are using an Ethernet cradle, you can automatically connect to and sync with a partnered PC on your network. Alternatively, you can establish a generic connection to your network and/or launch a specified application on your terminal.

Note: You cannot use ActiveSync 4.0 or later to synchronize data between a PC and a Windows CE-based device through an Ethernet cradle.

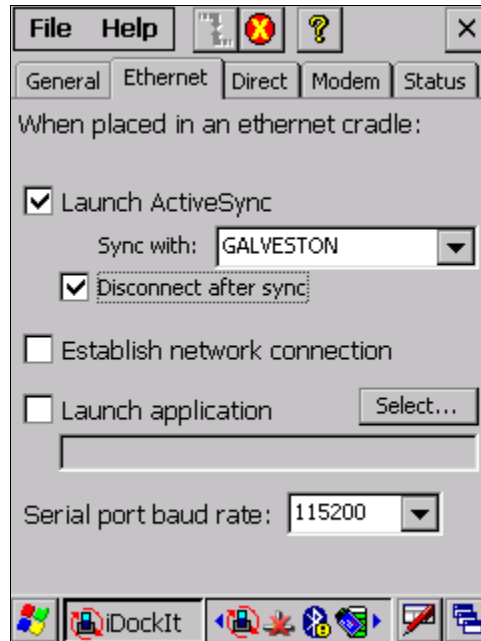


Figure 10: Ethernet Settings Tab

LAUNCH ACTIVESYNC

Check this option to have iDockIt launch ActiveSync when you cradle your terminal. ActiveSync will connect to the PC specified in the **Sync with** option on your network.

Notes: Before you can select this option, you must connect to the PC with a serial or USB cable or cradle and use ActiveSync® to set up a partnership with that PC.

Checking this option automatically unchecks **Establish network connection** and **Launch application**. Similarly, checking either one of those options automatically unchecks **Launch ActiveSync**.

Sync with

Your handheld terminal can have partnerships with up to two PCs. This list shows only the PCs with which your terminal has a partnership. Select the PC with which you want ActiveSync to sync data.

Disconnect after sync

Check this option to disconnect automatically from the selected PC when ActiveSync has completed synchronization.

ESTABLISH NETWORK CONNECTION

Check this option to have iDockIt establish a connection to your network when you cradle your terminal.

If you check this option, **Launch ActiveSync** is automatically unchecked.

You can check this option in conjunction with **Launch application**. After iDockIt establishes the network connection, it will launch the specified application.

LAUNCH APPLICATION

Check this option to have iDockIt launch the selected application when you cradle the terminal. iDockIt will use the specified command line parameters. You must select an application to launch.

If you check this option, **Launch ActiveSync** is automatically unchecked.

Select...

1. Tap the **Select** button to open the **Select Auto-Launch Application** dialog.
2. Select a **File Type** in the drop-down list.
3. Select a **Folder** (as needed).
4. Select a file name in the list.
5. Use the input panel to specify command line parameters.
6. Tap **OK** at the top of the screen.

The selected application will appear in the settings tab.

SERIAL PORT BAUD RATE

This option allows you to specify the baud rate iDockIt should use for a serial connection to the Ethernet cradle. Set this rate to match the baud rate configured for the cradle. For maximum performance, always use the maximum baud rate of 115200.

If using a USB-to-Ethernet cradle, the USB driver automatically controls the connection speed.

Direct (Serial/USB) Settings

If you use a serial or USB cradle OR connect to your terminal with a serial or USB cable, you can automatically connect to the connected PC or network OR you can choose a PC with which you have set up a partnership using ActiveSync. Alternatively, if your PC supports RAS connections you can connect to your network through your PC and/or launch a specified application on your terminal.

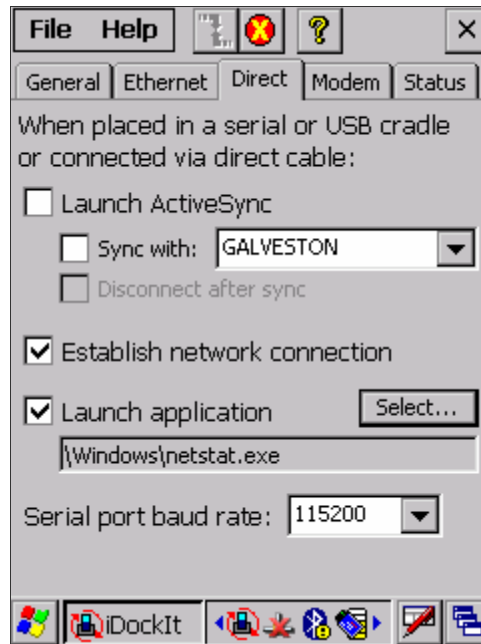


Figure 11: Direct (Serial/USB) Settings Tab

LAUNCH ACTIVE SYNC

Check this option to have iDockIt launch ActiveSync® when you place your terminal in a serial or USB cradle or when you connect it to a serial or USB cable.

Note: Checking this option automatically unchecks **Establish network connection** and **Launch application**. Similarly, checking either one of those options automatically unchecks **Launch ActiveSync**.

Sync with:

When this option is not checked, your terminal will synchronize data with the PC to which it is connected. To synchronize with a different PC, check this option and select the PC in the list.

ActiveSync will be able to connect to this alternate PC automatically ONLY IF you check this option.

Disconnect after sync is available only if you select this option.

Disconnect after sync

Check this option to disconnect automatically from the PC when ActiveSync has completed synchronization.

ESTABLISH NETWORK CONNECTION

Check this option to have iDockIt establish a connection to your network when you place your terminal in a serial or USB cradle or connect it to a serial or USB cable. In order to establish a connection to your network, you must connect the terminal to a PC with a RAS server. If you have ActiveSync running on your PC, it can be used as a RAS server.

If you check this option, **Launch ActiveSync** is automatically unchecked.

You can check this option in conjunction with **Launch application**. After iDockIt establishes the network connection, it will launch the specified application.

LAUNCH APPLICATION

Check this option to have iDockIt launch the selected application when you place your terminal in a serial or USB cradle or connect it to a serial or USB cable. iDockIt will use the specified command line parameters. You must select an application to launch.

Select...

1. Tap the **Select** button to open the **Select Auto-Launch Application** dialog.
2. Select a **File Type** in the drop-down list.
3. Select a **Folder** (as needed).
4. Select a file name in the list.
5. Use the input panel to specify command line parameters.
6. Tap **OK** at the top of the screen.

The selected application will appear in the settings tab.

SERIAL PORT BAUD RATE

This option allows you to specify the baud rate iDockIt should use for a serial cable or cradle. Set this rate to match the PC that the cradle or cable is connected to.

If you are using a USB cradle or cable, the USB driver automatically controls the connection speed.

USB NOTES

The InVision USB cradle driver for the PC maps the USB port to a virtual COM port, assigning it the next available port number. Refer to the user guide for your cradle.

Before you install the driver, open ActiveSync® Connection Settings to see which ports are available. After you install the driver, a new COM port will be available. Select this port for your USB cradle.

Check **Allow USB...** in ActiveSync Connection Settings only if you have a direct USB connection (no cradle) to your terminal.

If you restart your PC or ActiveSync, the port selection may revert to COM1. Display Connection Settings and re-select the correct USB COM port.

Modem Cradle Settings

If you use a modem cradle, you can automatically connect to a remote PC or network OR you can choose a PC with which you have set up a partnership using ActiveSync®. Alternatively, you can connect to your network and/or launch a specified application on your terminal.

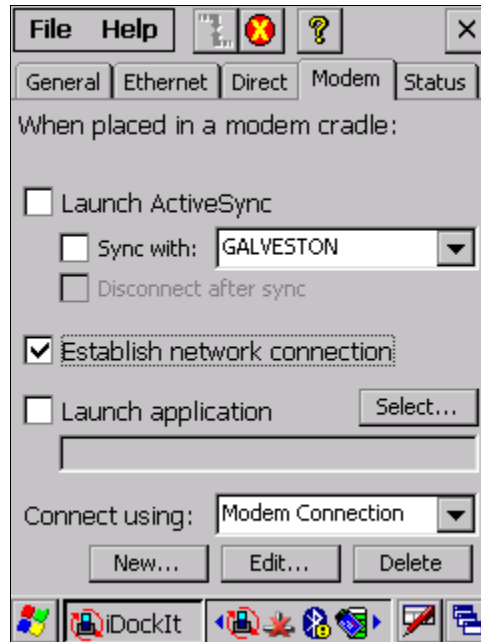


Figure 12: Modem Settings Tab

LAUNCH ACTIVESYNC

Check this option to have iDockIt launch ActiveSync® when you place your terminal in a modem cradle.

Notes: Checking this option automatically unchecks **Establish network connection** and **Launch application**. Similarly, checking either one of those options automatically unchecks **Launch ActiveSync**.

Sync with:

When this option is not checked, your terminal will synchronize data with the PC that is directly connected to the remote modem. To synchronize with a different PC, check this option and select the PC in the list.

Disconnect after sync is available only if you select this option.

Disconnect after sync

Check this option to disconnect automatically from the selected PC when ActiveSync has completed synchronization.

ESTABLISH NETWORK CONNECTION

Check this option to have iDockIt establish a network connection when you place your terminal in a modem cradle. iDockIt will use the modem connection specified in the **Connect using** list in this tab.

If you check this option, **Launch ActiveSync** is automatically unchecked.

You can check this option in conjunction with **Launch application**. After iDockIt establishes the network connection, it will launch the specified application.

LAUNCH APPLICATION

Check this option to have iDockIt launch the selected application when you place your terminal in a modem cradle. iDockIt will use the specified command line parameters. You must select an application to launch.

If **Establish network connection** is checked the application will not be launched until a connection is successfully established.

Select...

1. Tap the **Select** button to open the **Select Auto-Launch Application** dialog.
2. Select a **File Type** in the drop-down list.
3. Select a **Folder** (as needed).
4. Use the input panel to specify command line parameters.
5. Select a file name in the list.
6. Tap **OK** at the top of the screen.

The selected application will appear in the settings tab.

CHOOSE CONNECTION

The **Connect using** drop-down list includes all modem connections that you have defined for your terminal. Choose the one you wish to use.

If you check the General settings options to **Display settings when cradled** and **Auto-connect after x seconds**, you will have an opportunity to select the appropriate modem connection when you cradle your terminal.

If you do not check the above options, iDockIt will use the last modem connection you selected.

Tap **New** to create a new modem connection.

Tap **Edit** to change the settings of an existing modem connection.

Tap **Delete** to delete the currently displayed modem connection.

CREATE A NEW MODEM CONNECTION

1. Get the following information from your ISP or network administrator: dial-up access telephone number, user name, password, domain name, and TCP/IP settings.
2. Tap **New** below the **Connect using** list.
3. In the Connection Properties dialog, enter a name for the connection.

4. In the Modem list, tap your modem type. For the modem cradle, tap **Hayes Compatible on COM1**.
5. Tap **Configure** and change any Port Settings or Call Options in the Device Properties dialog, depending on requirements for your modem.
6. Tap **Next** after entering the connection name and choosing a modem.
7. Enter the access phone number and then tap **Next**.
8. Enter Login information (user name, password, and domain name) and then tap **Next**.
9. You should not need to change any TCP/IP settings unless directed by your ISP or network administrator. Tap **Next** and then tap **Finish** in the next server address dialog.

The new modem connection will be in the drop-down list.

EDIT AN EXISTING MODEM CONNECTION

1. In the **Connect using** list, select the modem connection you need to modify.
2. Tap **Edit**.
3. In the Connection Properties dialog, make any necessary changes to the connection name, modem, or modem configuration options. Tap **Next** to continue or **OK** to close the dialog.
4. If you continue, you can change the access phone number. Tap **Next** to continue or **OK** to close the dialog.
5. If you continue, you can change your login information. If you need to make any TCP IP setting changes, tap **Next**. Otherwise, tap **OK** to close the dialog.

DELETE AN EXISTING MODEM CONNECTION

1. In the **Connect using** list, select the modem connection you want to delete.
2. Tap **Delete**.
3. The Modem Settings dialog asks you to confirm that you want to delete the named modem connection. Tap **Yes**.

The modem connection will be removed from the drop-down list.

Uninstalling iDockIt

From Windows Mobile® 5.0 Devices

1. Exit iDockIt.
2. In the System Tab, tap the Remove Programs icon.
3. Select **InVision iDockIt** in the program list.
4. Tap **Remove** and select **Yes** in the Remove Program dialog.
5. Tap **OK** at the top of the screen.

From Windows® CE 5.0 Devices

1. Exit iDockIt.
2. Tap **Start>Settings** and double-tap the Remove Programs icon.
3. Select **InVision iDockIt** in the program list.
4. Tap **Remove** and select **Yes** in the Remove Programs dialog.
5. Ignore the Remove Programs Error dialog if it appears. Tap **OK** at the top of the screen.
6. Close the Remove Programs dialog and Settings screen.